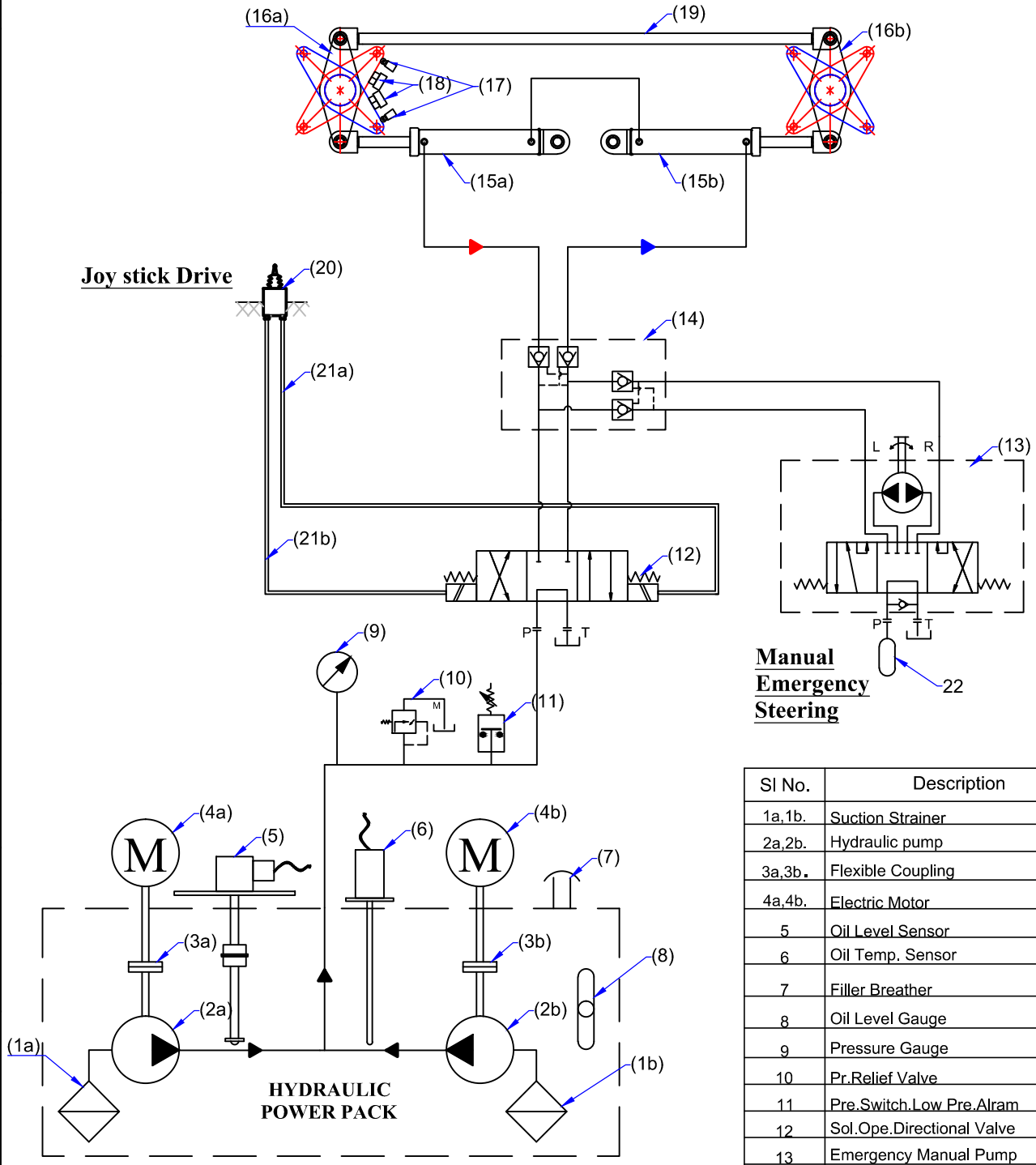


Electro-Hyd. Circuit - JumboZ-500

1
2
3
4
5
6
7
8
9
10

1
2
3
4
5
6
7
8
9
10



SI No.	Description
1a,1b.	Suction Strainer
2a,2b.	Hydraulic pump
3a,3b.	Flexible Coupling
4a,4b.	Electric Motor
5	Oil Level Sensor
6	Oil Temp. Sensor
7	Filler Breather
8	Oil Level Gauge
9	Pressure Gauge
10	Pr.Relief Valve
11	Pre.Switch,Low Pre.Alarm
12	Sol.Ope.Direction Valve
13	Emergency Manual Pump
14	Pilot Operated Check Valve
15a,15b	Hyd. Actuator
16a,16b	Tiller Arm
17	Limit Switch
18	Mechanical Stopper
19	Connection Rod
20	Joy Stick
21a,21b	Ele.Line to Sol.Ope.Valve
22	Oil Reservoir